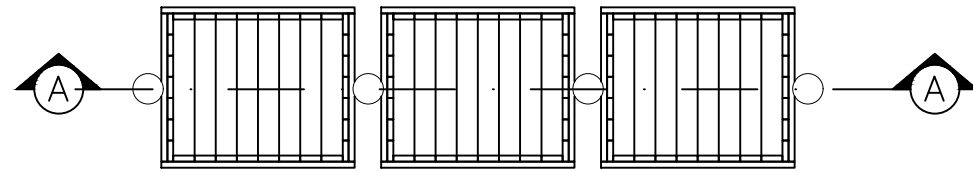
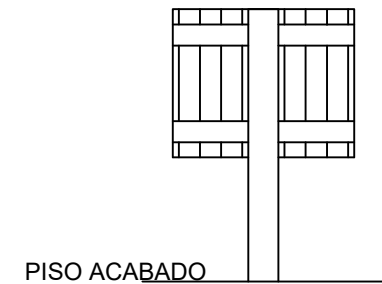


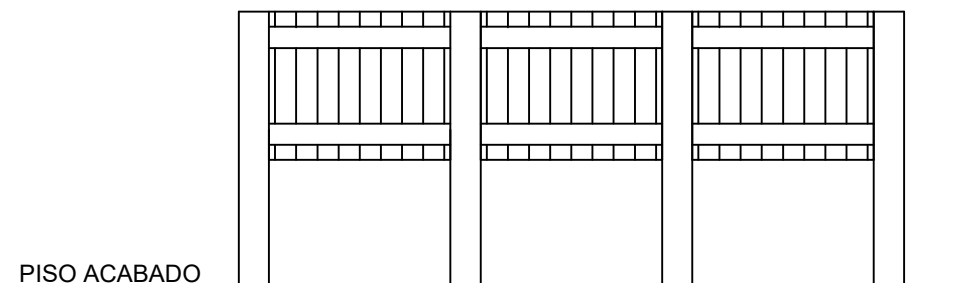
02 - DETALHE LIXEIRA EM EUCALIPTO



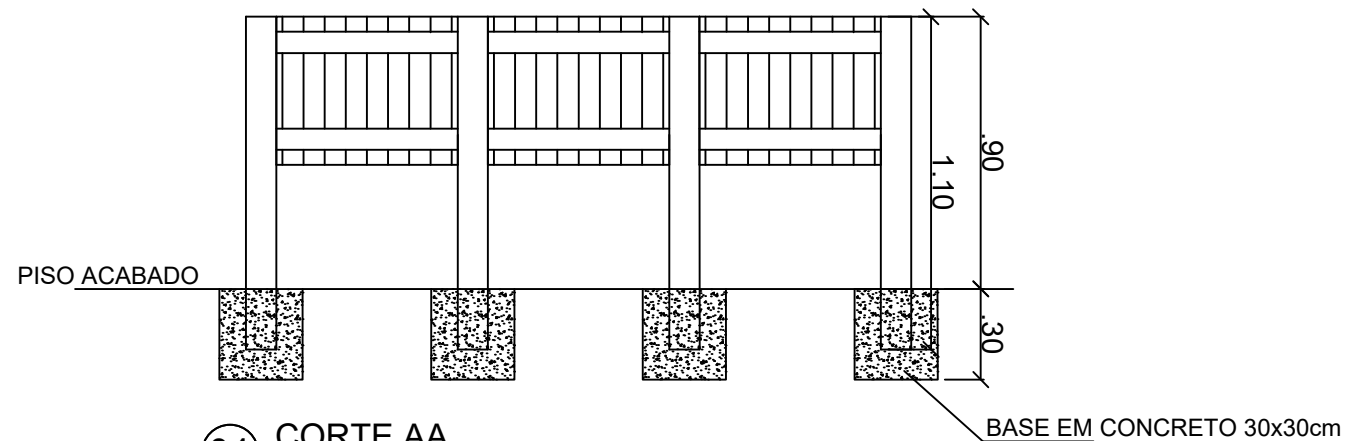
01 VISTA SUPERIOR
ESCALA 1/25



02 VISTA LATERAL
ESCALA 1/25



03 VISTA FRONTAL
ESCALA 1/25



04 CORTE AA
ESCALA 1/25

Igor Montenegro Fausto
Igor Montenegro Fausto
Engenheiro Civil CRE/AL 9047-TP
Parteira n° 008/2017
Prefeitura de Porto de Pedras/AL